



VIVIENDA LUXURY HOMES

The Green Grove

GOA



VIVIENDA LUXURY HOMES





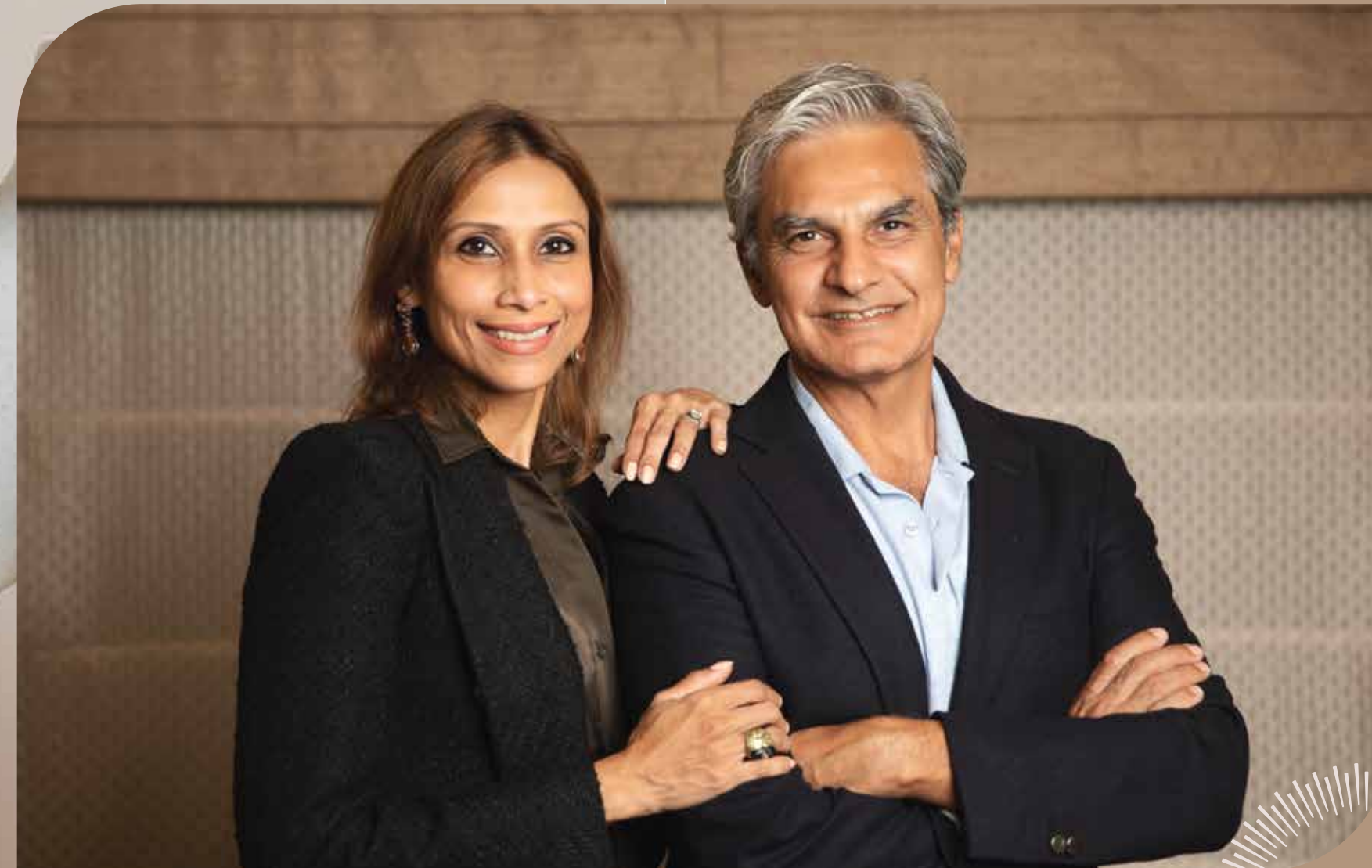
The VLH Lifestyle

Experience the epitome of luxury with homes thoughtfully designed to accommodate all your needs, ensuring convenience and ease of service.

Immerse yourself in a world where every detail has been considered, where spaciousness, outdoor beauty, and unparalleled amenities blend seamlessly to create an exquisite living experience.

Our carefully designed spaces provide spacious rooms that cater to your work-from-home and holiday needs while exceeding all your expectations for entertainment.

Karen & Nitin



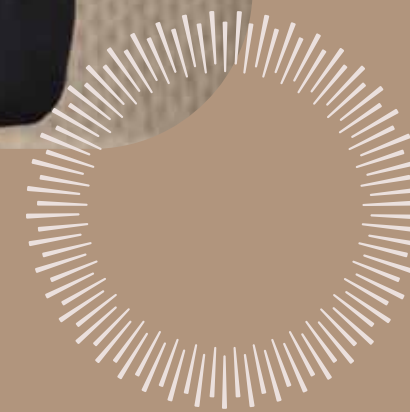
Nitin and Karen Bhatia founded VLH as a brand to amalgamate their unique skill sets.

Nitin is an architect and Façade specialist running India's foremost Façade Design and Engineering Consultancy. He has vast experience in the construction industry.

Karen is a lifestyle specialist. A nutritionist and Physiologist who has, over the years, refined her understanding of a luxury lifestyle.

Nitin and Karen are both self-made, individually successful entrepreneurs, well-traveled, and enjoy a luxurious lifestyle.

Nitin and Karen are passionate about good design, simple luxury and believe in creating homes that are an experience taking care of every little need.



Our Pledge

We are new developers but we are deeply rooted in Goa and are highly skilled at what we do.

Karen Bhatia is Goan and belongs to a well known family of Saligaon.

She is committed to offering a luxurious lifestyle absorbing the best elements of the true Goan way of life.

Nitin Bhatia is a design and construction expert. He is truly committed to designing functional homes that serve every purpose and meet the standards of luxury construction which Goa lacks.

His designs are built to last and weather well, and are a reminder of a time long gone with a touch of old world charm.

Like a fine wine or whisky the elements of true luxury are experienced with time and having lived a life similar to what he builds for his customers.

VLH isn't a business its their passion. Its them sharing a part of their lives with their customer.

VLH is a reflection of what they stand for - high integrity, classy design, highest quality standards and a strong desire to deliver excellence.





The Green Grove

MOIRA - NACHINOLA, NORTH GOA

Location





Why Moira, Nachinola?

Everyone who comes to invest in Goa is lead to believe that Goa is about the party district and what it stands for.

The busy roads, hawkers, and excessive bustle you see in those overpopulated areas is not Goa.

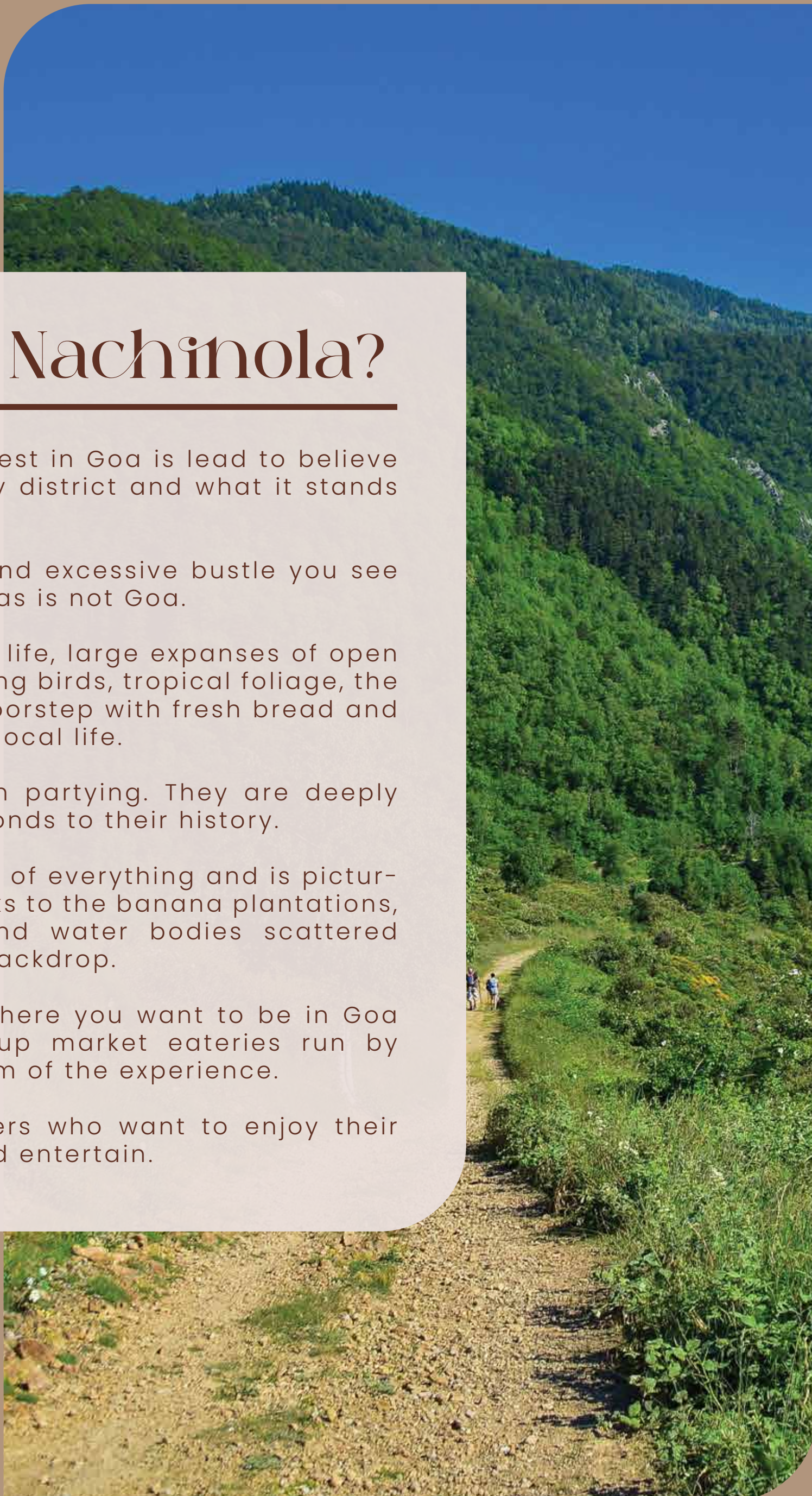
Goa is about quaint village life, large expanses of open fields, peacocks and stunning birds, tropical foliage, the poi-wala coming to your doorstep with fresh bread and other charming aspects of local life.

Goans are a lot more than partying. They are deeply cultured and hold strong bonds to their history.

Moira – Nachinola has a bit of everything and is picturesque and spread out thanks to the banana plantations, expansive paddy fields and water bodies scattered around with the hills as a backdrop.

Its well connected to anywhere you want to be in Goa and enjoys some quaint up market eateries run by locals that add to the charm of the experience.

Its suitable for home owners who want to enjoy their home, spend time there and entertain.



In The Vicinity

THE GREEN GROVE

OFF THE MOIRA - ALDONA ROAD

LOCATION	DISTANCE	TIME
Mapusa Market	5.9 km	13 Min
Vagator	11.9 km	25 Min
Assagao	8.4 km	20 Min
MOPA Airport	31 km	45 Min
Dabolim Airport	40 km	54 Min



The Project



Site Layout



The Green Grove is an 8 Villa community on a pristine piece of land measuring a little less than an acre.



Views From the Land

Land Slopes down
towards the fields,
thereby providing
Views of the fields,
river and hills
to all villas.



G FLOOR VIEW FROM 4 & 8



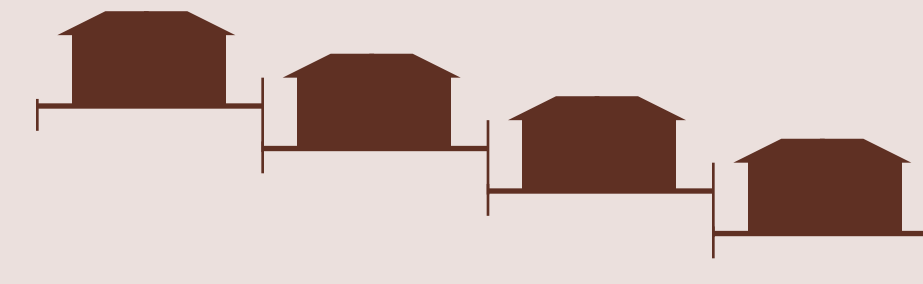
G FLOOR VIEW FROM 1 & 5
F FLOOR VIEW FROM 2 & 6



G FLOOR VIEW FROM 3 & 7
F FLOOR VIEW FROM 4 & 8



F FLOOR VIEW FROM 1 & 5



Floor Level Views

Expected views from the various floor levels of our villas at The Green Grove.

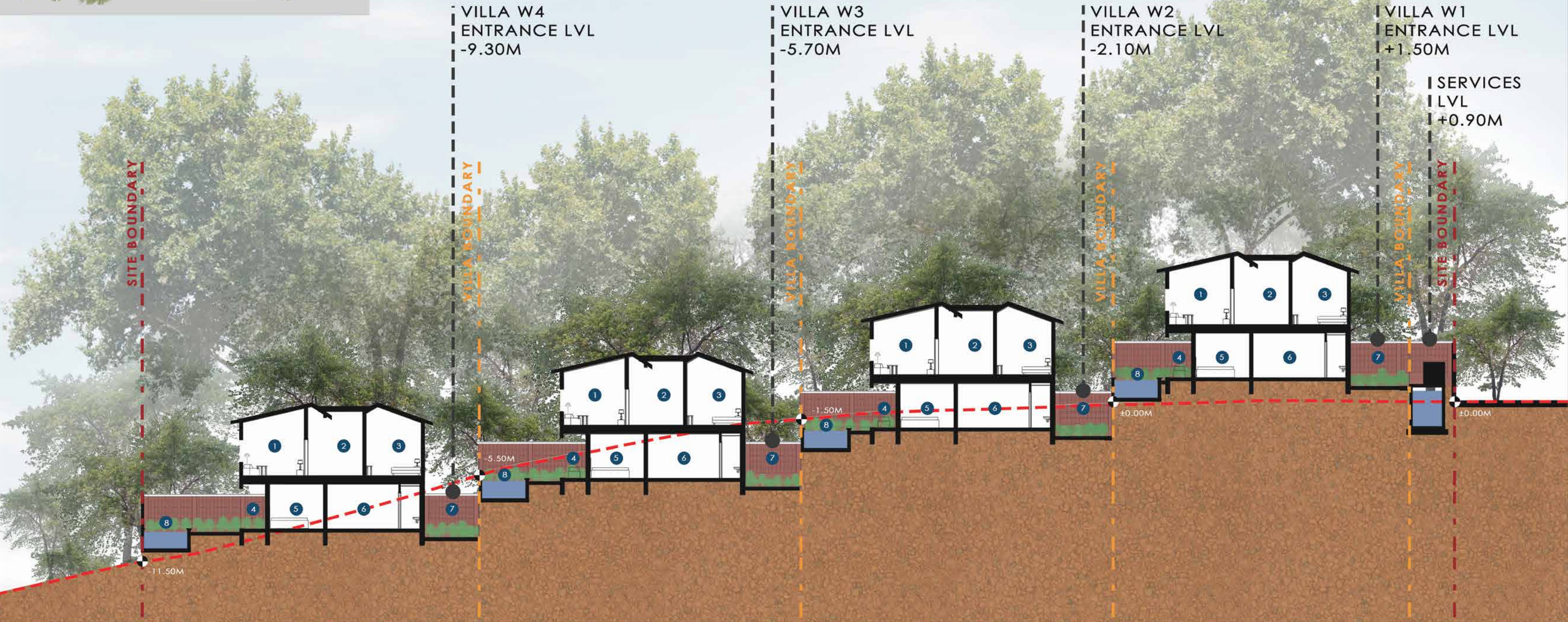


3D
RENDERS





Cross Section



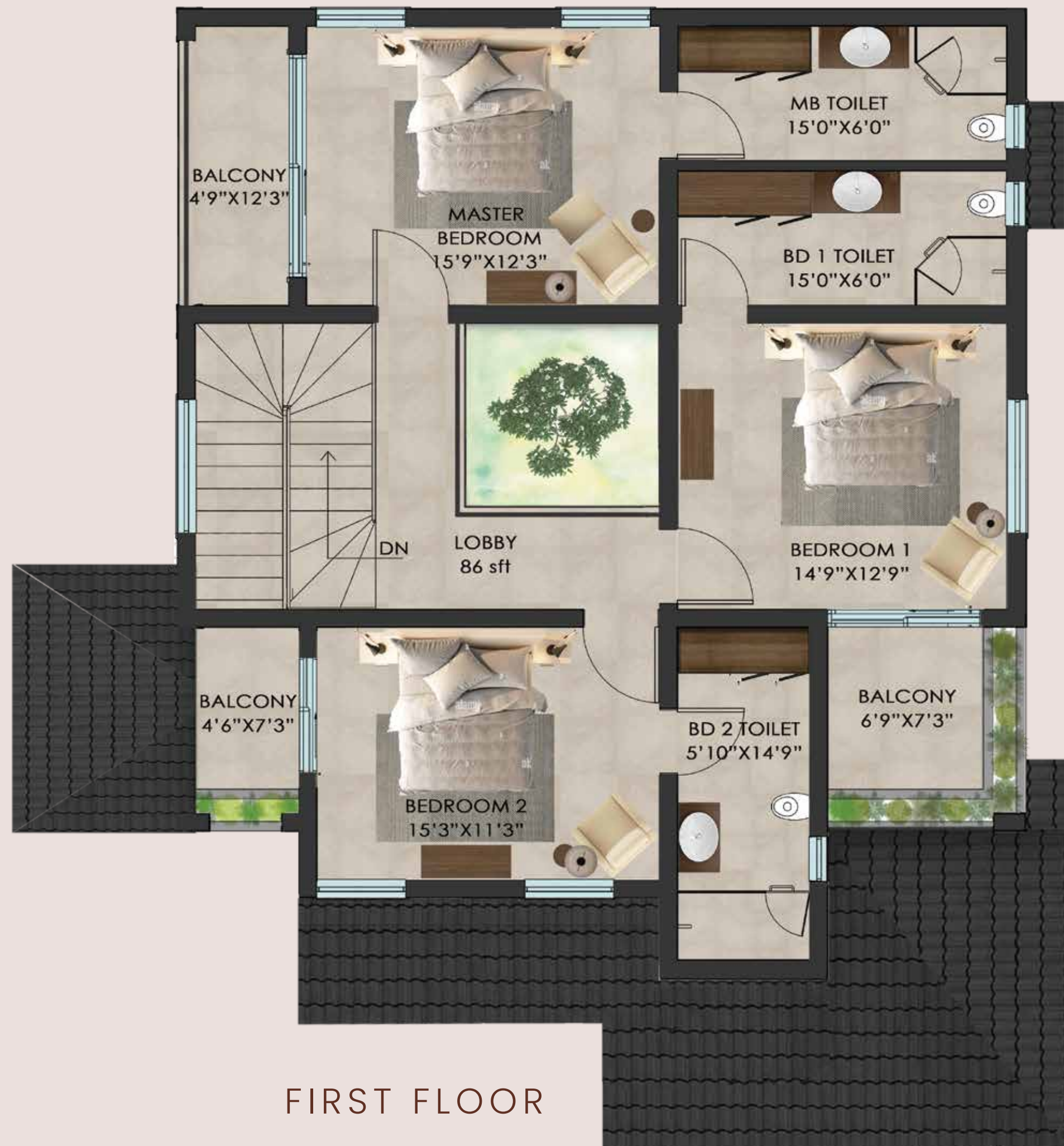
Floor Plan

WEST FACING VILLAS



Floor Plan

EAST FACING VILLAS



Carpet Area 2411 Sft., Super Built Up Area 3600 Sft.

Interiors











Specifications



Specifications

Drawing and Dining	Marble + Tile flooring, bespoke sofa sets with side and coffee table, curtains and carpets. 6 Seater dining table and console.
Kitchen	Modular kitchen with hob, chimney, microwave, refrigerator, crockery and cutlery.
Bedrooms	Customised King / twin beds and complete premium bedding linen. Fitted Wardrobes.
Bathrooms	Marble / Tiled walls and floors, cubicles for shower, designer sanitaryware and fittings.
Light fittings and Fans	Chandelier, spots, fans, exhaust fans, water heater etc will be provided for all rooms as appropriate.
Maids Room	Single bed, curtains, wardrobe.
Utility	Shelving + Ironing board, washer cum dryer.
Garden / Terrace	Stone / tiling + Tree and plants per design.
Exterior finish	Texture finish with premium weather resistant paints.
Swimming Pool	Tiled, with filtration system.
Décor and furnishings	Included for the entire house.

***Entire home will be centrally air conditioned.**

Recently Completed Project

The White Grove

The White Grove is a product of the vision to meld a sense of old Goa with a more contemporary approach. The styling is luxurious from the patterned Italian marble floors, to the selection of fabrics and the handmade furniture.

The homes are not just holiday homes they are adaptable for those who may want to stay in them longterm, from the size of rooms to the storage spaces and the functionality of the home.

Its luxurious and a HOME – not a house.



















VIVIENDA LUXURY HOMES

RERA APPROVAL NUMBER
PRGO07232054

NITIN BHATIA

+91 99499 23571

nitin@vlh.co.in

Disclaimer: The content, plans, images, design, specification, dimensions and other details herein are purely indicative in nature, and these are to be treated as purely informative. T&C apply.